

# PCV Hose Assembly

EMISSION CONTROL (AUX. EMISSION CONTROL DEVICES)

## 16.PCV Hose Assembly

### A: REMOVAL

#### CAUTION:

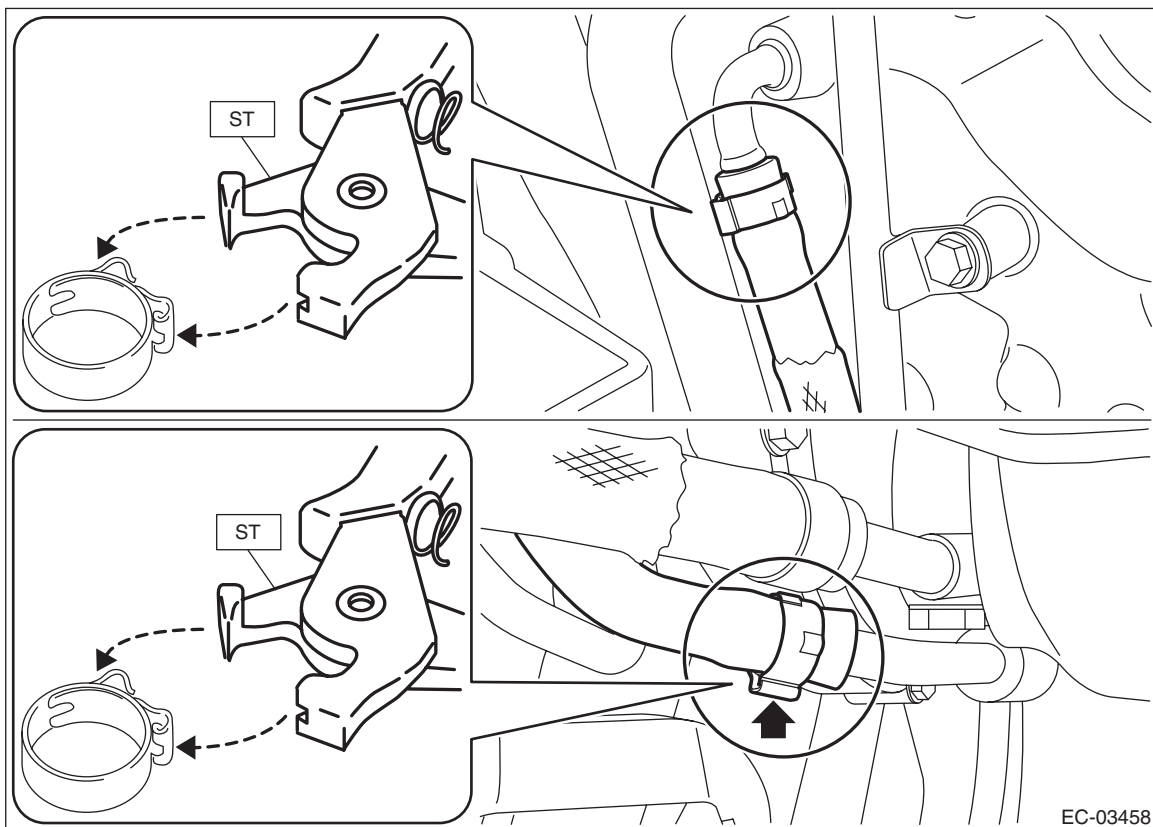
**Do not remove except when the PCV hose assembly is broken.**

- 1) Remove the air intake duct. <Ref. to IN(w/o STI)-22, REMOVAL, Air Intake Duct.>
- 2) Disconnect the PCV hose assembly from the chain cover, and remove the PCV hose assembly from the oil catch tank.

#### NOTE:

To disconnect the PCV hose assembly, fit the cut outs of the ST with the protrusions on the clamp as shown in the figure, squeeze the ST's handles together and unlock the clamp.

ST 18353AA000 CLAMP PLIERS



# PCV Hose Assembly

EMISSION CONTROL (AUX. EMISSION CONTROL DEVICES)

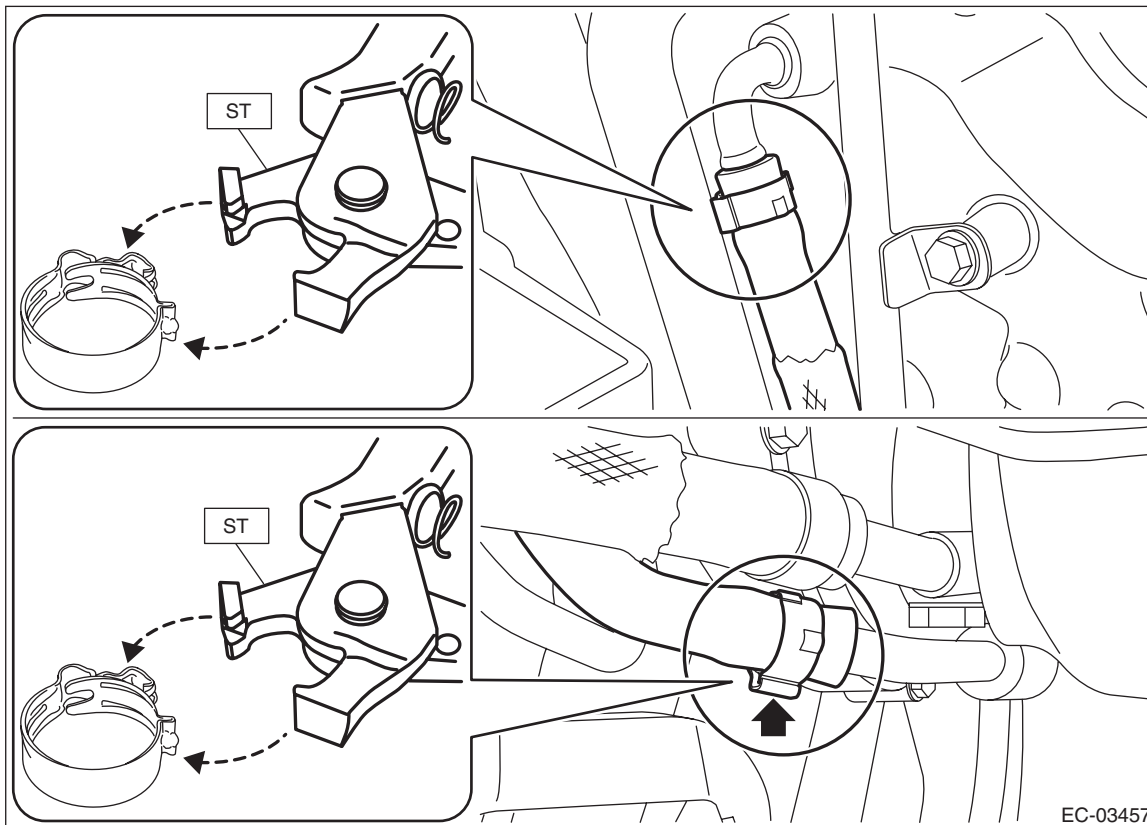
## B: INSTALLATION

Install in the reverse order of removal.

### NOTE:

Use a new clamp. To connect the PCV hose assembly, fit the cut outs of the ST with the protrusions on the clamp as shown in the figure, squeeze the ST's handles together and lock the clamp.

ST 18353AA000 CLAMP PLIERS



## C: INSPECTION

Check the PCV hose assembly for cracks, damage or looseness.